



Features and Benefits

Unique to AppsAnywhere by Software2

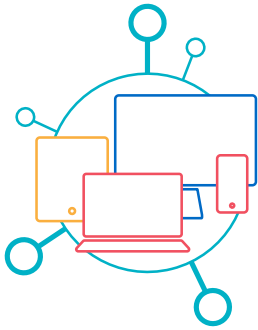


1.1. General Summary

Colleges and Universities seek a solution that enables the distribution, installation, and management license control of any of its licensed software titles for all users within the organization. End-users can access or launch all software titles from a single web-based portal. It is imperative that the single portal - whereby software is accessed - integrates with several different application delivery methods as we currently use a variety of technologies from different vendor

AppsAnywhere by Software2 is the only system that meets 100% of the following criteria:

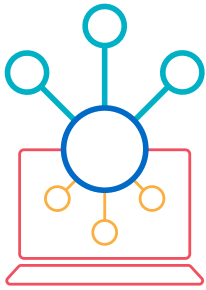
- Application Portal:** The system presents all software titles to users through a single interface. The single user interface can integrate with several application delivery technologies to deliver the software applications to end-user devices, according to the device in use and any license restrictions.
- Virtualization:** the solution virtualizes over 95% of Windows applications for delivery to managed and unmanaged computers. This is achieved without having an increased impact on the back end and network infrastructure already in place.
- Software streaming:** the solution includes a method for streaming the available software title(s) to end-user devices. This solution is easy to use such that the user can access the software on their device without direct intervention from an IT administrator.
- Management Module:** The system allows the IT department to manage access to various software titles and ensure license compliance. Access to the platform is managed through Active Directory. Access to software titles are restricted based on AD users or groups, the number of currently available licenses, the end-user's location, ownership of the device, or operating system. It is also possible to produce reports based on application usage from an integrated reporting module.
- Community:** It has access to other IT professionals who are virtualizing and distributing applications in a similar way. The information gained from this community aids with the technical aspects of packaging applications and application delivery.



1.2. Application Portal

AppsAnywhere by Software2 offers the only self-service portal that gives the user access to their applications using the following functionality:

- The portal connects to our existing Active Directory system and allows the use of users, computers, and groups to control access to the applications.
- Users can only access a range of applications specific to them.
- The portal can search, categorize, and share a link to applications so that users can more quickly find the applications they need.
- It offers the same user experience across all devices and display only the relevant software that is compatible or available for that device.
- The solution can determine where the end user is located and the type of device that they are using, so that an appropriate distribution method can be selected. For example, if the user is working remotely and cannot use an on-site license, they are instead presented with several alternative delivery mechanisms.
- If the user has already installed the application locally, it is possible to detect and run the existing copy so that additional licenses are not used).
- The portal can support all our current application delivery technologies, as well as a range of different delivery mechanisms giving us the flexibility to change the way we deliver applications in future. **The delivery mechanisms that are supported, but are not be limited to are:**
 - o Web links and cloud applications
 - o Secure download (and install)
 - o Microsoft SCCM
 - o Numecent Cloudpaging
 - o Parallels RAS
 - o VMWare
 - o Microsoft Remote App
 - o Citrix
 - o JAMF
- The portal can generate detailed reports on what licenses are used, (when and by whom), to accurately manage a group / pool of licenses.
- The portal is fully customizable to incorporate our logos, fonts, and styling.
- All functionalities of the application portal are available in the two most recent versions of the browsers Microsoft Edge, Mozilla Firefox, Google Chrome, and Safari.
- The portal supports single sign-on from Windows domain joined computers, and via Microsoft Office 365.
- The following SSO providers are supported and are simple for the IT department to configure: Azure AD, ADFS, OAuth 2.0, Shibboleth 2, SAML, Token based.
- Access to the portal is secure over https. Only valid certificates issued by a recognized Certificate Authority are used.

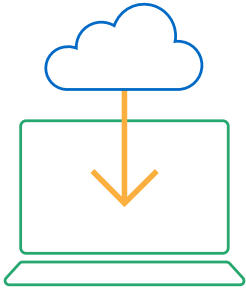


1.3. Virtualization Component

The virtualization component is an extremely important part of the proposed solution.

AppsAnywhere by Software2 is the only solution capable of the following:

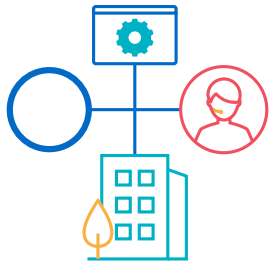
- Provides the ability to package and virtualize at least 95% of Windows applications using the supplied packaging tools. These tools are available to use for any member of the organization without restriction.
- It is possible to include services and drivers with virtualized applications, and to use these applications with any peripherals, such as printers, USB devices and scientific / industrial equipment.
- Virtualized apps perform in such a way that the end user has a “native performance” experience on Windows systems, similar to having a locally installed version of the application, but without having to install the application.
- It is possible to save and access files from any application, to and from any storage location, including network or cloud-based storage, and local or peripheral devices (including encrypted disks or connected storage).
- The system provides the ability to isolate applications from conflicts that may affect the core functionality of the host operating system.
- The system provides the ability to virtualize multiple versions of the same Windows applications on the same device.
- It is possible to configure virtualization to determine which parts of an application are isolated from the operating system and which parts of the application are integrated with the operating system. (For example, the isolation of Java or a license component without the need to isolate the full application).
- Applications are interoperable with all system components and with other applications.



1.4. Streaming Component

AppsAnywhere by Software2 is the only solution capable of the following:

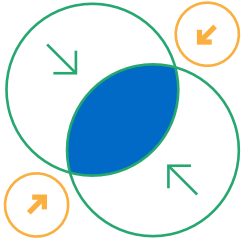
- **Allow for the streaming of Windows applications to any Windows 7 or 10 device, both managed and unmanaged, on or off campus:**
 - o Windows users can gain easy access to software applications where the user experience is equivalent to having the applications locally installed.
 - o The system can distribute virtualized applications to a set of computers both on-demand, and in advance of use.
 - o The system provides the ability to manage the number of concurrently available licenses for each application and per user, and to limit access accordingly.
 - o The end user does not have access application license keys.
 - o The system includes the ability to make a virtualized application available offline so that it can be used on a Windows device even when not connected to the internet. This includes the ability to set a time limit for the duration that the app can be used offline.
 - o Users can access applications any time from any location; however, control does not leave the IT department. Under no circumstance is the end user able to make a copy of the application to use it on another computer outside of the system.
 - o It is possible for the IT department to automatically remove access to applications when the user is no longer entitled to use them.
- Provides the possibility for end-users to install Mac and Windows applications of which they are entitled to their device if they have the proper administration rights.
- Provides the ability to stream Windows software to users of non-Windows devices, including Mac, Linux, iOS, Android and Chromebooks, whereby the application runs on a server, but is presented to the user in a seamless Window, such that the application looks and behaves similarly to a natively installed app.



1.5. Management Module

AppsAnywhere by Software2 includes the only management module which offers the following:

- The ability to limit access to applications to AD users, computers or groups thereof.
- It is possible to limit the number of users who can simultaneously use a streamed application, independent of any application specific license server.
- It is possible to limit access to applications based on the end-user's location, including whether they are connected to the organizational network, or working remotely.
- It is possible to restrict access to applications based on the ownership of the end-user's device, whether managed or unmanaged, and according to operating system.
- If an upgrade of a virtual application is available, it is possible to deliver the upgrade to all devices so that the upgrade is available on the next use of the application, and such that the end user is provided with a seamless user experience.
- It is possible to produce reports on application usage from an integrated reporting module.
- The administrators of the platform have access to an audit trail showing a detailed log of all management activities and configuration changes.



1.6. Community and Knowledge Transfer

With over 10 year's experience and 200 customers world-wide AppsAnywhere by Software2 offers best-in-class support from offices in Charlotte, NC and Leeds, UK.

- The provision of a knowledgebase that has all the required documentation to aid with the technical aspects of setting up and running the chosen solution.
- Access to other users of the solution with the ability to ask and respond to technical questions and share best practices via an online forum.
- The ability to meet and network with likeminded IT professionals who are already using the solution, to share best practices and enable knowledge transfer.
- Step-by-step guides to help with packaging and deployment of some of our application titles.
- The availability of professional training and certification in the use of the packaging tools.
- Access to industry experts who have first-hand experience of the deployment of the solution in live environments comparable to our own.

Like to see more?

[Arrange a demo](#)